

# *Electronic Point of Sales*

*HansaWorld Enterprise  
is ideal for an Electronic  
Point of Sale environment.*

This fully integrated system links your front office point of sales system directly to your back office operations. Access the relevant data real-time, or offline if required.





## Stock

HansaWorld has a fully integrated stock system. Refer to HansaWorld and Stock and Warehousing and HansaWorld and Purchasing for more details. Stock elements that can be unusual in other EPOS systems include:

- serial number tracking
- ability to take cash while only issuing stock later (whether for customer collection or despatch)
- multiple locations, and multiple positions at each location (for easier stock discovery)
- detailed and automated stock counting features
- multiple stock valuation methods
- extensive reporting on sales, margins, item histories, warranties and much more.

## Interface

Careful thought has been given to the user interface to ensure ease of use coupled with rapid data capture. Examples include:

- cursor movement to mandatory fields only
- item warnings to assist users
- user-definable buttons, at multiple levels
- access to all other parts of the integrated database.

## Real-time or Batch?

Many systems cannot handle the process of buying in one currency and selling in another, from the point of view of stock valuation. Not HansaWorld. Goods receipts save the currency the goods were charged in, with the current exchange rate at the date of booking in the stock.

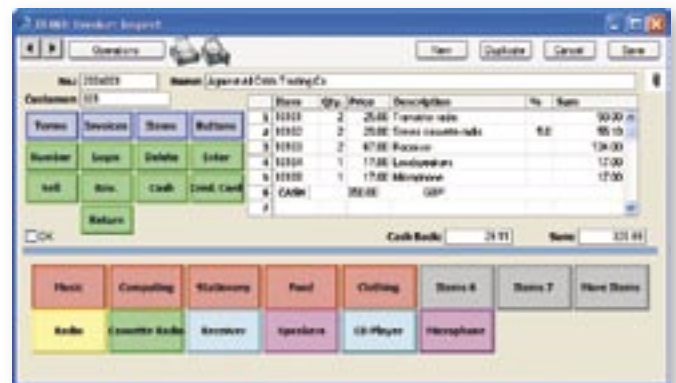
HansaWorld allows you to update cost prices of any range of stocked items with a maintenance process. This process can use the exchange rate at the date of goods receipt, to ensure a match with stock reports.

## Batch/Lot and Serial Numbers

HansaWorld is a real-time, fully integrated system. Many of the EPOS users will want to benefit from this, by keeping stock control figures in real-time. HansaWorld's unique design allows use over wide-area networks, including slow speed networks, without the requirement for expensive, complex third-party software. As a result HansaWorld is particularly simple to deploy real-time across multiple sites, allowing you to query stock in alternative locations where necessary.

Some companies may feel insecure working real-time across multiple sites, and will prefer to use HansaWorld's routines for uploading data from remote locations to the server - these can be run at any regularity, not just the traditional overnight method. This "batch" method also provides a fallback for real-time users, should the network connection go down for any reason.

More information can be found in the HansaWorld and Barcoding White Paper.



# Electronic Point of Sales *Sales*

## All in one

With HansaWorld software, your front office and back office are totally integrated so that they function as a single, powerful tool for all employees. There are more than 45 fully featured modules covering the key business areas of most organisations, allowing you to concentrate your data in one database. Having a single datafile improves the consistency of your data, and lowers the total cost of ownership by reducing the cost of upgrading. Users can choose to run the HansaWorld client software on any Windows operating system, from 2000 to XP, Pocket PC, Mac OS X and even Linux GUI solutions. The HansaWorld server can be run on Windows XP and 2003, Mac OS X, Linux, Unix and IBM OS/400. The preferred hardware for servers is an IBM eServer (xSeries, pSeries, iSeries or zSeries) or xServe (or G4 in smaller installations).

With the HansaWorld Portal and e-business solutions, you can extend the community of users beyond your own employees, by giving customers, prospects and other partners carefully controlled access to data via a web browser.

## Contact your partner

To learn more about HansaWorld ERP and CRM solutions contact your local HansaWorld office or distributor or a Certified HansaWorld Business Partner. HansaWorld offices and/or distributors are located throughout Europe, South America, South Africa and the Middle East. A list of HansaWorld offices and distributors can be found at the Country link on our website, [www.hansaworld.com](http://www.hansaworld.com). Details about local Certified HansaWorld Business Partners can be found at the Countries link at [www.hansaworld.com](http://www.hansaworld.com).

## Company profile

HansaWorld is a major international software company specialising in business applications. The group has 130 employees in office in Europe, South America and South Africa. Distributors are also found in Europe, South America and the Middle East.

HansaWorld's advanced and successful user interface was first developed for Apple Macintosh in 1988. In 1994, when the program was ported to Windows, it had already been proved by thousands of users. HansaWorld's experience with international sales and modern technology puts it in the perfect position to meet the challenges of the next decade.

HansaWorld provides a wide range of technologies for e-business including internal and external e-mail, several webshop solutions and PDA support. In addition, HansaWorld can help to build a corporate portal. HansaWorld is developed using C++ as its programming language, and proprietary technology for database design and for network communication.

This allows HansaWorld to have the same products available for several different operating systems, each version optimised for maximum performance. Currently HansaWorld is available for Windows 2000-XP, including Windows CE, Mac OS X and Unix, including Linux and OS/400. HansaWorld is IBM eServer proven, running on xSeries, pSeries, iSeries and zSeries.

Windows 2000, Windows 2003, Windows CE, Windows XP are registered trademarks of Microsoft Corporation. Apple Macintosh and MAC OS are registered trademarks of Apple Computer Inc. xSeries, pSeries, iSeries and zSeries are registered trademarks of IBM Corporation.  
Copyright HansaWorld Ltd.

Certified HansaWorld Business Partner

### Micro Business Solutions doo

Gospodar Jevremova 50, Beograd, Srbija  
[www.can-make-it.com](http://www.can-make-it.com); [www.micro-bs.com](http://www.micro-bs.com)  
[office@micro-bs.com](mailto:office@micro-bs.com); [hansaworld@micro-bs.com](mailto:hansaworld@micro-bs.com)  
tel. +381.11.30.36.555; fax. +381.11.30.36.526



Matrix Studios, 91 Peterborough Road  
Parsons Green, Fulham, London SW6 3BU  
Tel: +44 (0)845 123 2732 Fax: +44 (0)845 123 2739  
E-mail: [uk@hansaworld.com](mailto:uk@hansaworld.com)  
[www.hansaworld.com](http://www.hansaworld.com)